

EUROPICA TILES  
design • supply • install • relax

LAMINAM<sup>®</sup>



LAMINAM®

a completely new **dimension**  
an all **new skin** for architectural surfaces.

The Laminex Group™ introduces Laminam, a new concept in decorative surfaces with universal potential for the building, architectural and interior design world. Laminam is above all a truly versatile and flexible solution with high aesthetic appeal and technical performance. Laminam is the first ever large format ceramic slab with a thickness of just 3.5mm, making it possible to use large ceramic surfaces in previously unthinkable applications. Laminam is a revolutionary new way to skin **contemporary architectural** surfaces.

2007

Eureka Tower - Melbourne - Australia  
COLLECTION moro, avorio

# when large is synonymous **with light.**

Breaking the traditional concept of surfaces, it is now possible to go beyond the limits imposed by size and thickness. Laminam is the largest and thinnest ceramic surface ever seen. With a sheet size of 3000mm x 1000mm, Laminam concentrates a surface of 3m<sup>2</sup> in a thickness of just 3.5mm, making it exceptionally easy to handle and process.





# versatility that paves the way for **new ceramic** material applications



Being light and easy to process, Laminam offers an innovative solution for large surface design projects. Laminam is the perfect solution to enrich interior design projects and give life to new applications in bathrooms, kitchens, cupboards, tables, desks and furnishings. Laminam can be used in the building sector to cover indoor and outdoor surfaces, new and existing surfaces, ventilated facades and curtain walls. It can also be used in the boat building, healthcare, hospital and medical sectors, thanks to its lightness and excellent aesthetics.



# large surfaces with exceptional performance.

Laminam has high resistance to mechanical stress, chemical attack, scratching and deep abrasion. The advanced technology used to produce the slabs makes them **easy to clean** and resistant to frost, fire, mould and UV rays without altering their colour and properties. Laminam is the first **graffiti proof** ceramic surface. It's easy to clean and even the strongest paints can be easily removed.





### **CHEMICAL RESISTANCE**

LAMINAM resists organic and inorganic solvents, disinfectants and detergents. It can be easily cleaned without affecting its surface characteristics.



### **WEAR RESISTANCE**

LAMINAM is highly scratch and abrasion resistant. The properties of the slab remains unchanged even after intensive use and frequent cleaning.



### **HIGH FLEXURAL STRENGTH**

LAMINAM has a high modulus of rupture.



### **FROST RESISTANCE**

LAMINAM's average water absorption is 0.1% so it's frost resistant and suitable for all weather conditions.



### **REACTION TO FIRE**

LAMINAM does not contain organic material so it's resistant to fire and high temperatures. In the event of fire it does not release smoke or toxic substances.



### **HYGIENIC SURFACE**

LAMINAM is perfectly suitable for food preparation areas since it does not release soluble elements. It does not allow the formation of mould, bacteria and fungi.



### **CHROMATIC PROPERTIES**

LAMINAM does not contain organic pigments and is resistant to UV rays. Even if subjected to severe climate changes, the colours remain stable.



### **ECO-FRIENDLY**

LAMINAM is a totally natural product. It does not release any elements into the environment and can be easily milled and recycled in other manufacturing processes.



### **ANTI GRAFFITI**

LAMINAM is the first graffiti proof ceramic surface. It's easy to clean and even the strongest paints can be easily removed.

# environmentally friendly, Laminam's natural credentials.

The slabs, created with natural materials like quarry clays, granite rocks and ceramic pigments, do not release any substance into the environment. Laminam slabs are produced with **sustainable technology** that respects the entire eco-system and is designed to reduce processing waste to a minimum and limit the use of resources. The use of hybrid kilns that combine gas and electricity significantly reduces **CO<sub>2</sub>** emissions to the atmosphere. Thanks to the products lightness, Laminam is easy to transport, further reducing emissions. Laminam's planar, flexible and thin surface can be used to cover floors or walls or to renovate buildings **without demolishing the existing surfaces**.



OXIDE perla  
OXIDE avorio  
OXIDE nero  
COLLECTION perla







**2010**  
*Restaurant - Modena - Italy*  
OXIDE avorio

**2009**  
*Table Conference - Headquarters ACIMAC - Italy*  
COLLECTION nero





**2009**

*Casiraghi Architectural Firm - Milan - Italy*  
OXIDE moro

**2010**  
*Fendi Store - Rome - Italy*  
FILO oro







**2010**  
*Private House - Modena - Italy*  
FILO argento



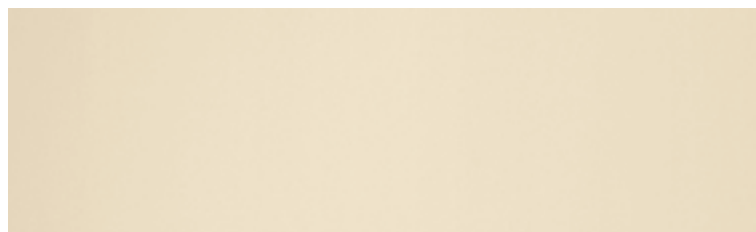


**2010**  
*Jewelry Shop - Seoul - Korea*  
COLLECTION *moro* 1000x3000

**2010**  
*Headquarters Laminam S.p.a - Fiorano Modenese - Italy*  
COLLECTION *nero* 1000x3000



LAMM<sup>®</sup>  
la grande e leggera superficie ceramica



AVORIO\*



FUMO\*



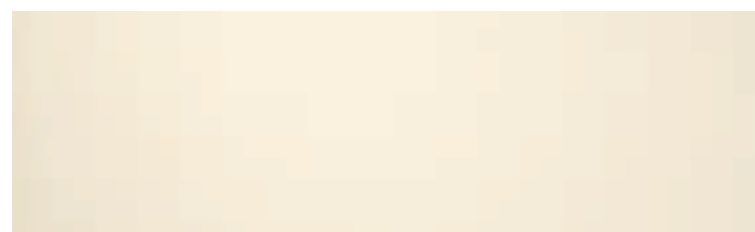
NERO\*



CRUSCA\*



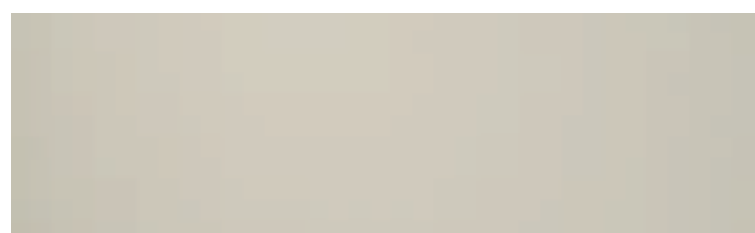
MORO\*



NEVE\*

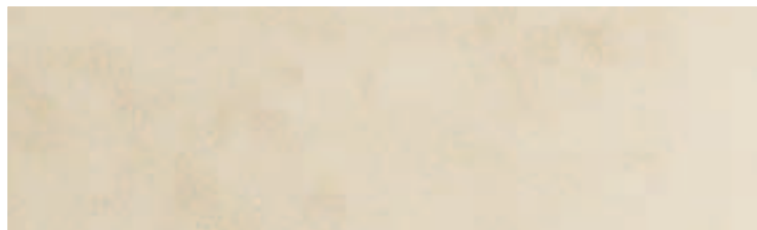


UVA\*



PERLA\*





AVORIO\*



GRIGIO\*



NERO\*



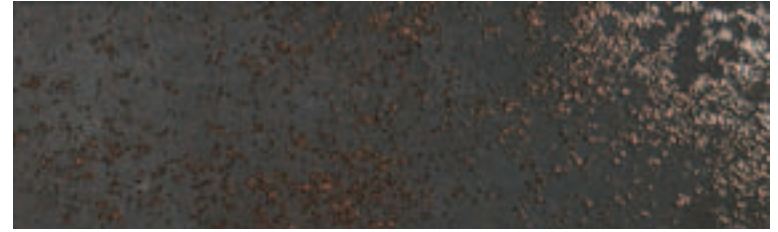
NOCE\*







AVORIO\*



NERO\*



MORO\*

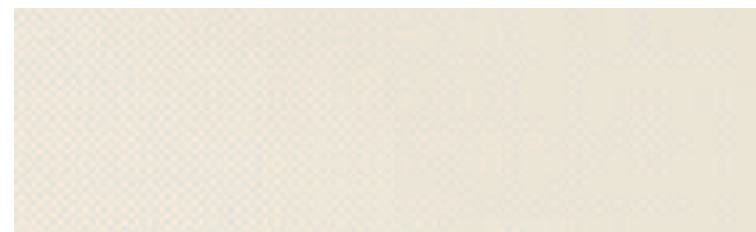


PERLA\*





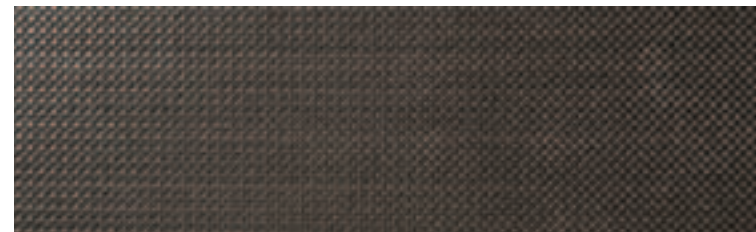
ARGENTO\*



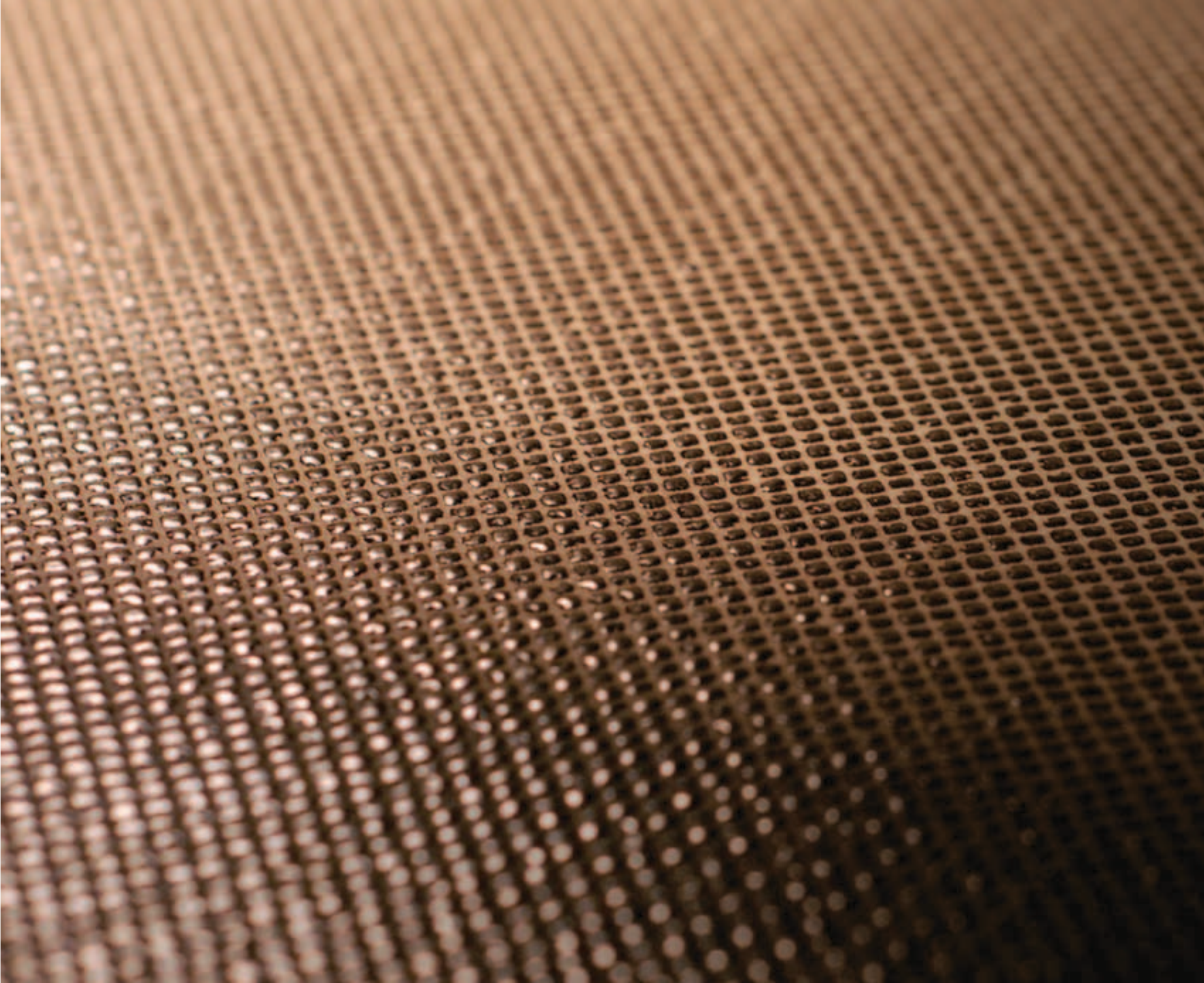
BRINA\*

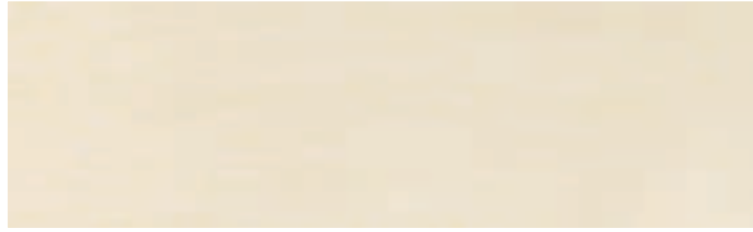


PECE\*

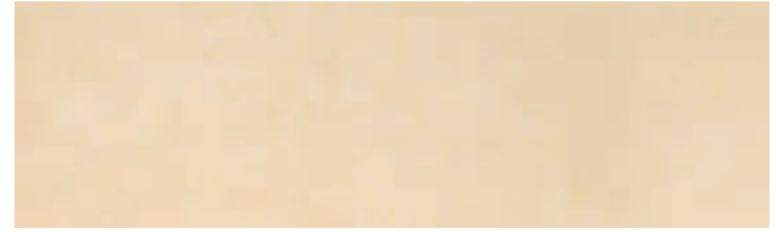


GHISA\*





TRAVERTINO AVORIO\*



CREMA MARFIL\*



BASALTO VENA SCURA\*



OSSIDIANA VENA SCURA\*



THE **laminex** GROUP™

Customer services 0800 303 606

[www.laminam.co.nz](http://www.laminam.co.nz)

Laminam is marketed and distributed by The Laminex Group, a division of *FLETCHER BUILDING PRODUCTS LTD.*