



antares

## INDICAZIONI D'USO

indications for use  
instructions d'utilisation  
anwendungsbereich  
indicaciones de uso  
указания по использованию  
upute o korištenju  
使用说明



## PAVIMENTO

floor tiles  
sol  
boden  
piso  
Пол  
Podovi  
地板



## RIVESTIMENTO

wall tiles  
revêtement  
wand  
revestimiento  
облицовка  
zidovi  
墙面

## DESTINAZIONI D'USO

suggested applications  
destination  
anwendungsbereich  
lugar de empleo  
предназначение  
krajnja namjena  
用途



## ABITAZIONE

domestic purpose  
habitation  
wohnbereich  
habitación  
жилое помещение  
stanovanje  
住宅



## COMMERCIALE LEGGERO

tiles for light commercial traffic area  
passage léger  
gewerblichen bereich  
pequeña superficie comercial  
Торговое помещение с легкой нагрузкой  
Male trgovine  
低流量商业

## FINITURA

finish  
 finition  
Oberfläche  
acabado  
отделка  
obrađenost  
终加工



## NATURALE

natural  
naturel  
natur  
matt  
Природный  
Prirodne  
自然式

## STRUTTURA

structure  
structuré  
Struktur  
estructura  
структура  
структура  
结构



## LISCIO

smooth  
lisse  
glatt  
liso  
гладкий  
glatko  
光滑

## ASPETTO SUPERFICIALE

surface look  
aspect superficiel  
Aussehen der Oberfläche  
aspecto superficial  
внешний вид  
izgled površine  
表面外观



## SEMILUCIDO

semi-glossy  
semi-brillant  
halbglänzend  
semibrillante  
полуглянцевый  
polusjajno  
半抛光

## BORDO

edge  
bord  
rand  
borde  
кромка  
rub  
边缘



## DRITTO

straight  
droit  
gerade  
derecho  
Прямой  
ravne  
直线型

## STONALIZZAZIONE

shade variation  
variation de nuances  
schattierung  
destonalización  
Разброс цветового тона  
Gradacija  
石质化



## V2

# antares



**10x10**  
4"x4"

**16,5x16,5**  
6.5"x6.5"

**33,3x33,3**  
13.1"x13.1"

**50x50**  
20"x20"

**40x60**  
16"x24"

## GRES PORCELLANATO

Porcelain tiles  
Grès cérame  
Glasiertes Feinsteinzeug  
Porcelánico  
Керамогранит глазурованный  
Porculansko-kamene pločice  
上釉仿石瓷磚

MADE IN ITALY  
PRODOTTO ESCLUSIVAMENTE IN ITALIA





---

ANTARES BT MIX

---

ANTARES 10B

---

ANTARES 10T



antares

---

ANTARES BT MIX

---

ANTARES 10B

---

ANTARES 10T





ANTARES 50T



antares

antares

ANTAR.16GN MIX

ANTARES 16G

ANTARES 16N



antares

ANTAR.16GN MIX





ANTARES 50N



antares



antares

---

ANTARES GN MIX

---

ANTARES 10G

---

ANTARES 10N

---

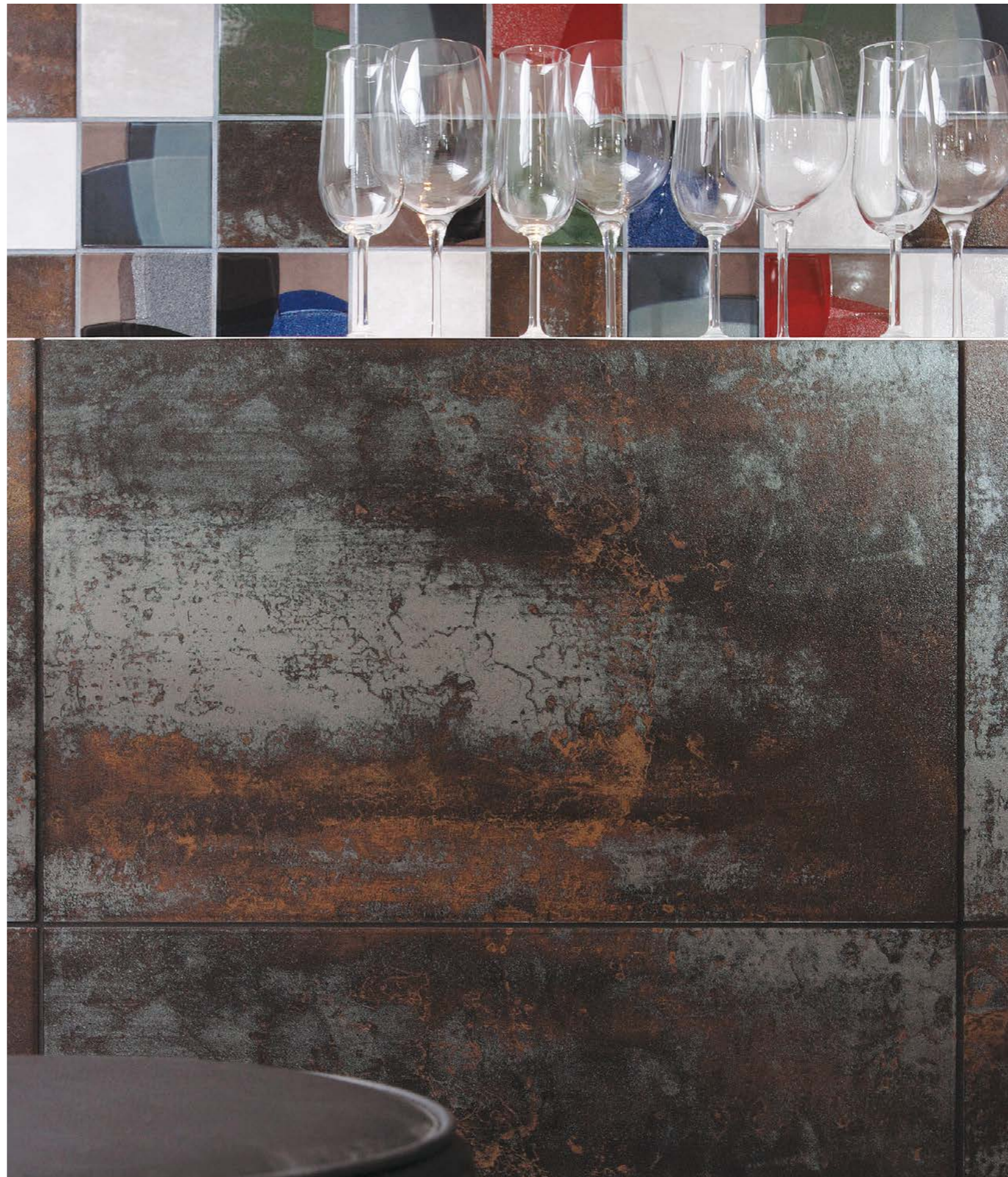
ANTARES 46G

---

ANTARES 46N

---





---

ANTARES GN MIX

---

ANTARES 10G

---

ANTARES 10N

---

ANTARES 46N

---





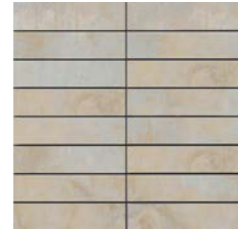
ANTARES 46B  
40x60 - 16"x24"



ANTARES 50B  
50x50 - 20"x20"



MK.ANTARES 25B  
25x50 - 10"x20"



MK.ANTARES 30B  
30x30 - 12"x12"



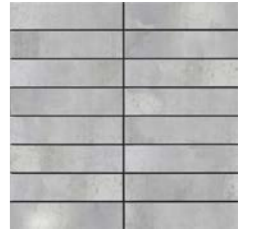
ANTARES 46G  
40x60 - 16"x24"



ANTARES 50G  
50x50 - 20"x20"



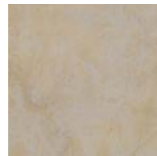
MK.ANTARES 25G  
25x50 - 10"x20"



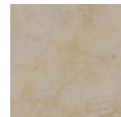
MK.ANTARES 30G  
30x30 - 12"x12"



ANTARES 33B  
33,3x33,3 - 13.1"x13.1"



ANTARES 16B  
16,5x16,5 - 6.5"x6.5"



ANTARES 10B  
10x10 - 4"x4"



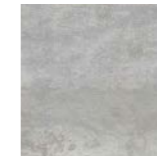
L.ANTARES 1  
4x50 - 1.6"x20"



L.INOX 50  
1x50 - 0.4"x20"



ANTARES 33G  
33,3x33,3 - 13.1"x13.1"



ANTARES 16G  
16,5x16,5 - 6.5"x6.5"



ANTARES 10G  
10x10 - 4"x4"



L.ANTARES 2  
4x50 - 1.6"x20"



L.INOX 50  
1x50 - 0.4"x20"



ANTARES 46T  
40x60 - 16"x24"



ANTARES 50T  
50x50 - 20"x20"



MK.ANTARES 25T  
25x50 - 10"x20"



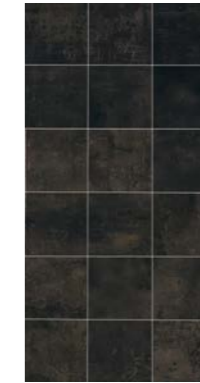
MK.ANTARES 30T  
30x30 - 12"x12"



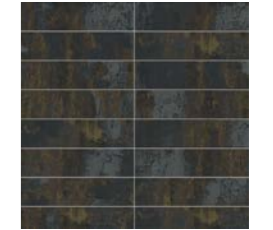
ANTARES 46N  
40x60 - 16"x24"



ANTARES 50N  
50x50 - 20"x20"



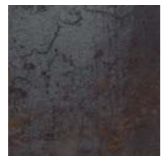
MK.ANTARES 25N  
25x50 - 10"x20"



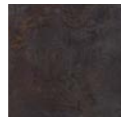
MK.ANTARES 30N  
30x30 - 12"x12"



ANTARES 33T  
33,3x33,3 - 13.1"x13.1"



ANTARES 16T  
16,5x16,5 - 6.5"x6.5"



ANTARES 10T  
10x10 - 4"x4"



ANTARES 33N  
33,3x33,3 - 13.1"x13.1"



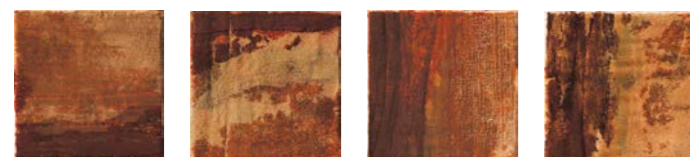
ANTARES 16N  
16,5x16,5 - 6.5"x6.5"



ANTARES 10N  
10x10 - 4"x4"



ANTARES BT MIX  
10x10 - 4"x4"



ANTAR.16BT MIX  
16,5x16,5 - 6,5"x6,5"



MULL 16BT MIX  
16,5x16,5 - 6,5"x6,5"



ANTARES GN MIX  
10x10 - 4"x4"



ANTAR.16GN MIX  
16,5x16,5 - 6,5"x6,5"



MULL 16GN MIX  
16,5x16,5 - 6,5"x6,5"



PEZZI SPECIALI

Trims  
Pièces spéciales  
Sonderstücke  
Piezas especiales  
Специальные элементы  
Naročiti dijelovi  
特制品

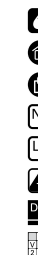


9,5x50 - 3,7"x20"

ANTARES BT 50B  
ANTARES BT 50T  
ANTARES BT 50G  
ANTARES BT 50N

Wall tiles  
Revêtement  
Wandfliese  
Revestimiento  
Облицовка  
Zidovi  
墙面

Porcelain tiles  
Grès cérame  
Glasiertes Feinsteinzeug  
Porcelánico  
Керамогранит глазурованный  
Porculansko-kamene pločice  
上釉仿石瓷磚



	10x10 4"x4" 8,3 Ƨ	16,5x16,5 6,5"x6,5" 8,5 Ƨ	33,3x33,3 13,1"x13,1" 8,5 Ƨ	50x50 20"x20" 10 Ƨ	40x60 16"x24" 9,5 Ƨ	9,5x50 3,7"x20"
B	ANTARES 10B	ANTARES 16B	ANTARES 33B	ANTARES 50B	ANTARES 46B	ANTARES BT 50B
T	ANTARES 10T	ANTARES 16T	ANTARES 33T	ANTARES 50T	ANTARES 46T	ANTARES BT 50T
G	ANTARES 10G	ANTARES 16G	ANTARES 33G	ANTARES 50G	ANTARES 46G	ANTARES BT 50G
N	ANTARES 10N	ANTARES 16N	ANTARES 33N	ANTARES 50N	ANTARES 46N	ANTARES BT 50N

	10x10 4"x4"	16,5x16,5 6,5"x6,5"	30x30 12"x12"	25x50 10"x20"	4x50 1,6"x20"	1x50 0,4"x20"
B	ANTARES BT MIX	ANTAR.16BT MIX MULL 16BT MIX	MKANTARES 30B	MKANTARES 25B	LANTARES 1 LANTARES 2	LINOX 50
T	ANTARES BT MIX	ANTAR.16BT MIX MULL 16BT MIX	MKANTARES 30T	MKANTARES 25T	LANTARES 1 LANTARES 2	LINOX 50
G	ANTARES GN MIX	ANTAR.16GN MIX MULL 16GN MIX	MKANTARES 30G	MKANTARES 25G	LANTARES 1 LANTARES 2	LINOX 50
N	ANTARES GN MIX	ANTAR.16GN MIX MULL 16GN MIX	MKANTARES 30N	MKANTARES 25N	LANTARES 1 LANTARES 2	LINOX 50

CARATTERISTICHE TECNICHE SPECIFICHE

G = Gres porcellanato - Porcelain tiles - Grès cérame - Glasiertes Feinsteinzeug - Porcelánico - Керамогранит глазурованный - Porculansko-kamene pločice - 上釉仿石瓷磚

PROGETTO	TIP	ARTICOLO	PEI - ISO 10545 - 7	DIN 51130 (R)	DIN 51097 (A+B+C)	ASTM C1028/96	BOOT 3000 (DCOF)	BCR Rep.CEC 6/81	DM 14/6/89 n.236	UNI EN 1339:2005/ COR.2011 ANNEX F	
			CLASSE			n.a.	n.b.	g.b.	g.a.	g.b.	c.a.
ANTARES	G	ANTARES B	4	R9	A	-	-	0,26	-	-	-
		ANTARES T	4					0,31			
		ANTARES G	4					0,22			
		ANTARES N	4					0,48			

# ECO

La natura e la tecnologia si fondono per dar vita a un nuovo concetto di ceramica che mette al centro il rapporto tra l'uomo e l'ambiente; un binomio inscindibile per il conseguimento consapevole dei principi di eco-efficienza aziendale ed eco-compatibilità ambientale sigillata da importanti riconoscimenti.

Nature and technology combine to give birth to a new concept in ceramic tiles which places the relationship between man and the environment at the centre; an inseparable combination for the conscious achievement of eco-efficient corporate principles as well as those of environmental eco-compatibility, sealed with important recognitions.

La nature et la technologie se fondent pour donner naissance à un nouveau concept de céramique qui met au centre le rapport entre l'homme et l'environnement; un binôme indissociable pour que les principes d'éco-efficience de l'entreprise et d'éco-compatibilité environnementale une fois acquis soient reconnus par d'importants labels.

Natur und Technik verbinden sich, um ein neues Konzept der Keramik zu schaffen, in dessen Mitte die Beziehung zwischen Mensch und Umwelt steht; eine untrennbare Zweisamkeit für die bewusste Durchführung der Prinzipien der ökologischen Effizienz auf Firmenebene und der Umweltverträglichkeit, die durch wichtige Anerkennungen besiegelt sind.

La naturaleza y la tecnología se funden para dar vida a un nuevo concepto de cerámica que subraya la relación entre el hombre y el ambiente; un binomio inseparable para alcanzar los principios de eco-eficiencia empresarial y eco-compatibilidad ambiental sellado por importantes reconocimientos.

Природа и технология слились воедино для воплощения новой концепции в керамике, ставящей в центр отношение между человеком и окружающей средой; неразрывный симбиоз для сознательного достижения принципов эффективного природосбережения и экологической совместимости, скрепленных значительными признаниями.

Priroda i tehnologija se spajaju u rađanju novog koncepta keramike što se usredotočuje na odnos čovjeka i okoliša; nerazdvojna kombinacija za svjesno ostvarivanje načela ekološke učinkovitosti poduzeća i ekološke kompatibilnosti, potvrđena značajnim priznanjima.

自然与技术结合，带来全新的陶瓷理念，以人与自然的关系为中心，落实企业生态效率和环境兼容性原则，获得多项重要认证。





**COOPERATIVA  
CERAMICA  
D'IMOLA**

**Cooperativa Ceramica d'Imola S.c.**

Via V. Veneto, 13 - 40026 Imola BO, Italia  
Tel. +39 0542 601601 - Fax +39 0542 31749  
info@ccimola.it - ccimola.it

**imolaceramica.it**  
info@imolaceramica.it

