

# Mineral

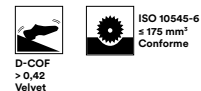
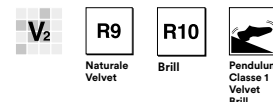
- Gres Fine Porcellanato Colorato in Massa • Colorbody Fine Porcelain Stoneware • Grès Cérame Fin Coloré dans la Masse • Durchgefärbtes Feinsteinzeug • Gres Porcelánico Fino Coloreado en Masa • Гомогенный мелкозернистый Керамогранит

**Naturale**  
75x150 • 25x150 • 75x75 • 60x60 • 30x60

**Velvet**  
75x75

**Brill**  
75x75

Rettificato Monocalibro • Rectified Monocaliber  
• Calibre Unique • Rektifiziert Monokaliber •  
Rectificado Monocalibre • Ректифицированный  
Монокалиберный



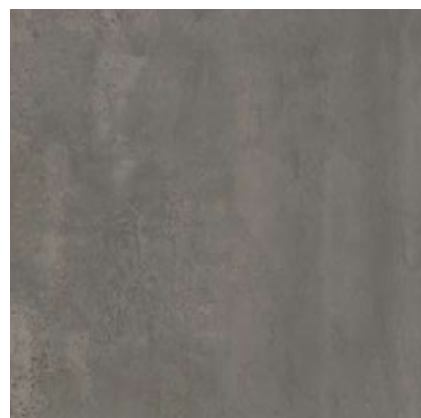
Conforme • According to • Conforme •  
Gemäß • Conforme • Соответствует  
UNI EN 14411 - G Bla



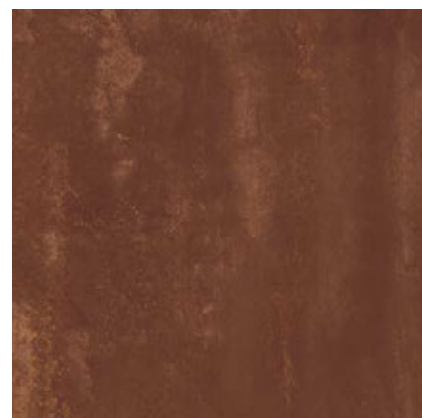
Black



Bronze



Iron



Corten



Silver



Formati • Sizes • Formats • Formate • Formatos • Форматы



**75x150**  
MQXU Mineral Black Rett.  
MQXV Mineral Bronze Rett.  
MQXW Mineral Iron Rett.  
MQXX Mineral Silver Rett.  
MQXY Mineral Corten Rett.



**25x150**  
MOMW Mineral Black Rett.  
MOMX Mineral Bronze Rett.  
MOMY Mineral Iron Rett.  
MOMZ Mineral Silver Rett.  
MONO Mineral Corten Rett.



**60x60**  
MASL Mineral Black Rett.  
MASM Mineral Bronze Rett.  
MASN Mineral Iron Rett.  
MASP Mineral Silver Rett.  
MASQ Mineral Corten Rett.



**30x60**  
MASR Mineral Black Rett.  
MASS Mineral Bronze Rett.  
MAST Mineral Iron Rett.  
MASU Mineral Silver Rett.  
MASV Mineral Corten Rett.



**75x75**  
M9AV Mineral Black Rett.  
M9AW Mineral Bronze Rett.  
M9AX Mineral Iron Rett.  
M9AY Mineral Silver Rett.  
M9AZ Mineral Corten Rett.

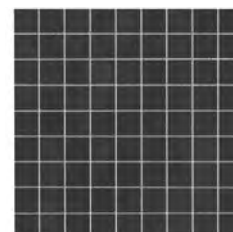


**75x75 Velvet**  
MQY9 Mineral Black Velvet Rett.  
MQYA Mineral Bronze Velvet Rett.  
MQYC Mineral Iron Velvet Rett.  
MQYD Mineral Silver Velvet Rett.  
MQYE Mineral Corten Velvet Rett.



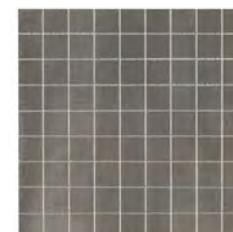
**75x75 Brill**  
MASF Mineral Black Brill Rett.  
MASG Mineral Bronze Brill Rett.  
MASH Mineral Iron Brill Rett.  
MASJ Mineral Silver Brill Rett.  
MASK Mineral Corten Brill Rett.

Rif. Black



**MOMR**  
Mosaico 37,5x37,5 (1)

Rif. Iron



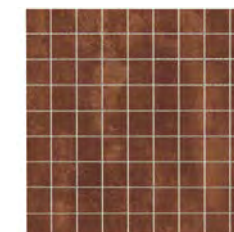
**MOMT**  
Mosaico 37,5x37,5 (1)

Rif. Silver



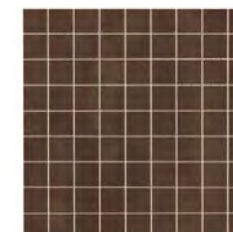
**MOMU**  
Mosaico 37,5x37,5 (1)

Rif. Corten



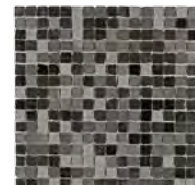
**MOMV**  
Mosaico 37,5x37,5 (1)

Rif. Bronze



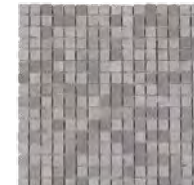
**MOMS**  
Mosaico 37,5x37,5 (1)

Rif. Black / Iron



**MOMA**  
Mosaico 30x30 (1)

Rif. Silver



**MOMC**  
Mosaico 30x30 (1)

Rif. Bronze



**MOMD**  
Mosaico 30x30 (1)

Rif. Black / Iron / Silver



**MOMP**  
Decoro 37,5x37,5 (1)

Rif. Black / Corten / Bronze



**MOMQ**  
Decoro 37,5x37,5 (1)

**Pezzi Speciali**  
Special Trims  
Pieces Speciales  
Formteile  
Piezas Especiales  
Специальные Изделия



	BATTISCOPIA 7x75 (6)	BATTISCOPIA 7x60 (6)
Mineral Black	MOLK	MOL2
Mineral Bronze	MOLL	MOL3
Mineral Iron	MOLM	MOL5
Mineral Silver	MOLN	MOL6
Mineral Corten	MOLR	MOL8

**Imballi**  
Packing  
Emballages  
Verpackungen  
Embalajes  
Упаковки

		Mq Sq. Mt Qm	Kg Kr	Scatole Box Karton Boite Caja Коробки	Mq Sq. Mt Qm	Kg Kr	Spessore Thickness Dicke Epaisseur Espesor Толщина
75x150 Rettificato	2	2,25	55,82	21	47,25	1.172,12	10,5
25x150 Rettificato	3	1,13	27,29	45	50,63	1.228,42	10,5
75x75 Rettificato	2	1,13	26,48	42	47,25	1.112,28	10,0
75x75 Velvet Rettificato	2	1,13	26,48	42	47,25	1.112,28	10,0
75x75 Brill Rettificato	2	1,13	26,48	42	47,25	1.112,28	10,0
60x60 Rettificato	3	1,08	25,50	40	43,20	1.020,00	10,0
30x60 Rettificato	5	0,90	22,44	48	43,20	1.077,17	10,0

\* Gli imballi vengono calcolati sulla base del quantitativo ordinato. •  
Packaging is calculated on the basis of the quantity ordered. • Die Verpackung  
wird auf der Grundlage der Bestellmenge berechnet. • Les emballages sont  
calculés en fonction de la quantité commandée. • Los embalajes se calculan  
según las cantidades encargadas en los pedidos. • Упаковки рассчитываются  
на основе заказанного количества.

		Mq Sq. Mt Qm	Kg Kr		Mq Sq. Mt Qm	Kg Kr	
37,5x37,5 Mosaico *							
37,5x37,5 Mosaico *							
30x30 Mosaico *							
7x75 Battiscopa	14	10,5 ml	18,42	-	-	-	10,0
7x60 Battiscopa	15	9,0 ml	15,00	-	-	-	10,0