



WALL Floralia Papilio 60x120 R ≈7 mm / Floralia Neige 60x120 R ≈7 mm

Floralia

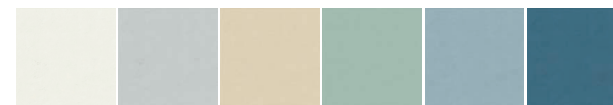


CAMELIA MAJORELLE PAPILIO PALMA ROSSIGNOL OMBRELLE

Grès cérame émaillé / Gres porcellanato
Glazed porcelain tiles / Glasiertes Feinsteinzeug

≈ 7 mm

60 x 120 R



LYS NEIGE BEIGE SAUGE BLEUET IRIS

Revêtement en pâte blanche / Pasta bianca da rivestimento
White body wall tiles / Weisscherbige Wandfliesen

≈ 7 mm

60 x 120 R



WALL Floralia Palma 60x120 R \approx 7 mm / Floralia Saugé 60x120 R \approx 7 mm **FLOOR** Salento Gris 60x120 R \approx 8,5 mm



WALL Floralia Ombrelle 60x120 R \approx 7 mm





FLOOR Hermione Beige 20x120 R \approx 8.5 mm

WALL Floralia Rossignol 60x120 R \approx 7 mm / Floralia Iris 60x120 R \approx 7 mm



WALL Floralia Majorelle 60x120 R \approx 7 mm

Floralia

Grès cérame émaillé /
Gres porcellanato /
Glazed porcelain tiles /
Glasiertes Feinsteinzeug

ISO 13006 - NF EN 14411 annexe G -
Groupe BIa - GL (E ≤ 0,5%)



FORMAT
Formato / Size / Format
60 x 120

SURFACE
Superficie / Surface / Oberfläche

60 x 120 **(N)**

BORD
Bordo / Edge / Kante

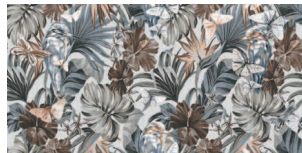
60 x 120 **(R)**



CAMELIA € m²
60 x 120 R 7 mm 00202273 97,70



MAJORELLE € m²
60 x 120 R 7 mm 00202274 97,70



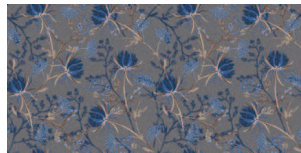
PAPILIO € m²
60 x 120 R 7 mm 00202278 97,70



PALMA € m²
60 x 120 R 7 mm 00202277 97,70



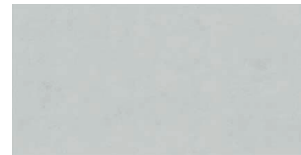
ROSSIGNOL € m²
60 x 120 R 7 mm 00202276 97,70



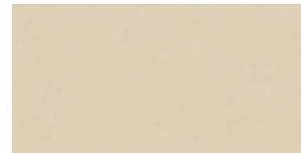
OMBRELLE € m²
60 x 120 R 7 mm 00202275 97,70



LYS € m²
60 x 120 R 7 mm 00202291 59,90



NEIGE € m²
60 x 120 R 7 mm 00202295 59,90



BEIGE € m²
60 x 120 R 7 mm 00202292 59,90



SAUGE € m²
60 x 120 R 7 mm 00202283 59,90



BLEUET € m²
60 x 120 R 7 mm 00202294 59,90



IRIS € m²
60 x 120 R 7 mm 00202296 59,90

Floralia

Revêtement en pâte blanche /
Pasta bianca da rivestimento /
White body wall tiles /
Weisscherbige Wandfliesen

ISO 13006 - NF EN 14411 annexe L -
Groupe BIII - (E > 10%)



FORMAT
Formato / Size / Format
60 x 120

SURFACE
Superficie / Surface / Oberfläche

60 x 120 **(N)**

BORD
Bordo / Edge / Kante

60 x 120 **(R)**

